

MOUNTING SELECTION SHEET

CLIENT: *The client is the person who will be receiving the equipment or services. (NOT FOR RENTAL. PURCHASE ONLY FORM)*

Client Last Name: _____ First Name: _____

Make/Model of Wheelchair: _____ Device/Access Method: _____

CONTACT PERSON: *Contact person is the person who would address any questions related to this Selection Sheet.*

Contact Last Name: _____ First Name: _____

Contact Information (phone/email): _____

All PRC-Salttillo stocked mounts are manufactured by Rehadapt. If you are requesting a mount **NOT** on this form (either from Rehadapt or another manufacturer), please attach a quote for that mount. Note: custom ordered mounts **cannot** be returned or exchanged.

Mounting Plate (E2599)



The Mounting Plate is included with the Accent® 1400 and Accent 1000 with Look®, but NOT included with other PRC-Salttillo device options. If ordering for a device without a plate and you would like a plate sent for that device, list device model and serial number (if known): _____

Step A

continue to Step B if selecting wheelchair mounts

Floorstands (E2512)



Pentalock Tele

includes counterweight



TeleLock

add quickpack option*



VarioLock

add floating option*

Table stands & clamps (E2512)



TS-XL



TS-GO



TS-UC



ClampOnMount

All Purpose Mounts (E2512) are available to accommodate variable or complex positioning of the SGD in multiple locations such as wheelchair and bed/chair/floor/etc. The VarioLock with floating option, and the TeleLock with quickpack option are not available for the All Purpose Mount. For pricing, configuration, and availability, contact your PRC-Salttillo consultant or the Funding Dept.

**Due to the cost of this product, it may not be available for all funding sources. Contact the Funding Dept. with questions.*

Wheelchair mounts (E2512)

Questions about wheelchair mounts? Fill in all client and contact information, attach photos on page 3, and submit this form to mounting@prc-salttillo.com.



RM-2

two tubes



RM-3

three tubes



RM-3-Hybrid**

thinner end tubes



RM-3-HD

double base tube



RM-S

curved main tube

****Use RM3-Hybrid with Accent 800, NovaChat® 8, and Via® Mini. Hybrids are light weight mounts. Consider RM-2 and RM-3 for greater support and stability.**

MOUNTING SELECTION SHEET

CLIENT: *The client is the person who will be receiving the equipment or services.*

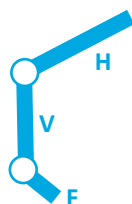
Client Last Name: _____ First Name: _____

Step B

Tubing size

F = frame tube, V = vertical tube, H = horizontal tube

Larger offset will set the device further from the client.



	Ship standard tube length			Replace one or more tubes (select specific tubes)							
	F	V	H	F		V				H	
				8"	12"	12"	16"	20"	24"	8"	16"
RM-2	-	20"	12"	-	-			-			
RM-3	8"	16"	12"	-			-				
RM-3-Hybrid	12"	16"	12"		-		-	-	-		
RM-3-HD	-	16"	12"	-	-		-		-		



Curved tube - **MUST** choose one

Small (offset 6", height 26")

Medium (offset 9", height 30")

Large (offset 12", height 34")

Horizontal tube (H) - **MUST** choose one

Ship standard tube length (16")

RM-S

Replace horizontal tube (12")

Step C

Frame clamps

Select one clamp, regardless of wheelchair mount.

Mount Location: left side • right side

for round tubes



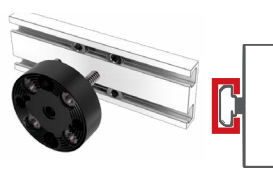
7/8"	round	
1"	round	side
1 1/8"	round	
1 1/4"	round	

for rectangular tubes



large

for T-nut rails



Quantum/Invacare

Quickie

Permobil

for frame with holes



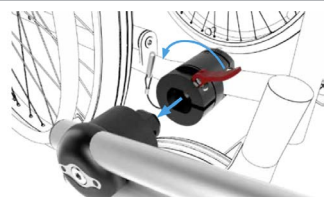
M6/M8 Thread (~1/4" and 5/16")

Additional frame clamp required? Please specify from list above.
For a quick & easy switch between two wheelchairs, we recommend the Base Coupler Option (see below).

Other Oval needed? Or any other special clamp? Please write make/model of the chair and email our mounting specialists.

Step D optional

Additional options available at an additional cost (E2512)
May not be available for all funding sources.



Base Coupler Option

Coupler with a quick release mechanism to remove the entire mount directly at the wheelchair frame



Second Coupler

Add a Second Coupler half for second wheelchair

Fold Down Joint Option for quick folding of mount
left side • right side

Left and right is from perspective of person in wheelchair.
Fold Down NOT available for hybrids.



Universal Quick Shift Joint

Included if Fold Down Joint option is not selected above

Offset Spacers for additional clearance when mounting around obstacles

1" Spacer QTY: _____

1 1/2" Spacer QTY: _____



MOUNTING SELECTION SHEET

CLIENT: *The client is the person who will be receiving the equipment or services.*

Client Last Name: _____ First Name: _____

Contact Last Name: _____ First Name: _____

Photos

Please provide photos of your client in their wheelchair. **Stock images will not be accepted.** Include tray and other accessories in photo. Make sure to include the device or a placeholder meant to present the device in the desired position.



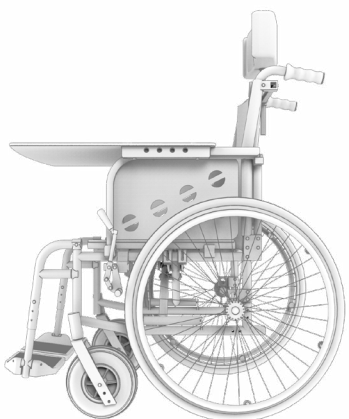
Front

[Click to upload picture](#)



Back

[Click to upload picture](#)



Left

[Click to upload picture](#)



Right

[Click to upload picture](#)