

MOUNTING SELECTION SHEET

CLIENT: *The client is the person who will be receiving the equipment or services. (NOT FOR RENTAL. PURCHASE ONLY FORM)*

Client Last Name: _____ First Name: _____

Client D.O.B. _____ Today's Date: _____ State of Residence: _____

Make/Model of Wheel Chair: _____ Device/Access Method: _____

CONTACT PERSON: *Contact person is the person who would address any questions related to this Selection Sheet.*

Contact Person Last Name: _____ First Name: _____

Phone: _____ Email: _____

All of PRC-Salttillo stocked mounts are manufactured by Rehadapt. If you are requesting a mount **NOT** on this form (either from Rehadapt or another manufacturer), please attach a quote for that mount. Please note that custom ordered mounts **cannot** be returned or exchanged.

QRM Mounting Plate



The QRM Mounting Plate is included with the PRC Accent 1400 and Nova 12.1, but **NOT included** with other PRC or Salttillo device options. If ordering for a device without a plate and you would like a QRM plate sent for that device, list serial number and model from back of device.

Serial No. (if known) _____

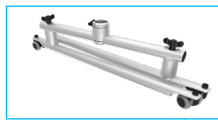
Step A (for wheelchair mounts continue to Step B)

Floorstands



Pentalock Tele

includes counterweight



TeleLock

*add quickpack option**



VarioLock

*add floating option**

Table stands & clamps



TS-XL



TS-GO



TS-UC



ClampOnMount

All Purpose Mounts are available to accommodate variable or complex positioning of the SGD in multiple locations such as wheelchair and bed/chair/floor etc. The VarioLock with floating option, and the TeleLock with quickpack option are not available for the All Purpose Mount. For pricing, configuration, and availability contact your PRC-Salttillo consultant or the Funding Dept *Due to the cost of this product, they may not be available for all funding sources. Contact the Funding Dept. with questions.

Wheelchair mounts



RM-2

two tubes



RM-3

three tubes



RM-3-Hybrid**

thinner end tubes



RM-3-HD

double base tube



RM-S

curved main tube

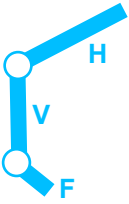
****Use RM3-Hybrid with Accent 800, NovaChat 5 & 8, TouchChat Express 10 & 8, and PRiO & PRiO mini. Hybrids are light weight mounts, please consider RM2 and RM3 for greater support and stability.**

Step B

Tubing size

F = frame tube, V = vertical tube,
H = horizontal tube

Larger offset will set the device further from the client.



	Ship standard tube length			Replace one or more tubes (select specific tubes)								
	F	V	H	F			V			H		
				8"	12"	12"	16"	20"	24"	8"	16"	
RM-2	-	20"	12"	-	-			-				
RM-3	8"	16"	12"	-			-					
RM-3-Hybrid	12"	16"	12"		-		-	-	-			
RM-3-HD	-	16"	12"	-	-		-		-			



Curved tube - **MUST** choose one

Small (offset 6", height 26")

Medium (offset 9", height 30")

Large (offset 12", height 34")

Horizontal tube (H) - **MUST** choose one

Ship standard tube length (16")

RM-S Replace horizontal tube (12")

Step C

Frame clamps

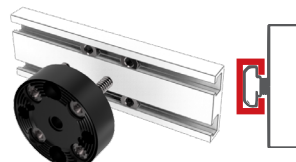
Select one clamp, regardless of wheelchair mount. Questions about which wheelchair frame clamp you need? Contact our mounting specialists at (800) 262-1990.

for round tubes

for rectangular tubes

for T-nut rails

for frames with holes



7/8"	round	side
1"	round	side
1 1/8"	round	
1 1/4"	round	

small	
large	

Quantum/Invacare	
Quickie	
Permobil	

M6/M8 Thread (~ 1/4" and 5/16")	
---------------------------------	--

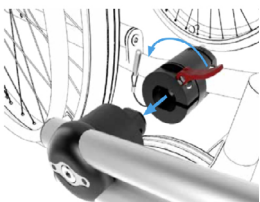
Additional

Additional Frame Clamp Required? Please specify from list above. For a quick & easy switch between two wheelchairs we recommend the Base Coupler Option (see below).

Other

Oval needed? Or any other special clamp? Please write make/model of the chair and call our mounting specialists.

*Additional options



Base Coupler Option

Coupler with a quick release mechanism to remove the entire mount directly at the wheelchair frame.



Second Coupler

Add a Second Coupler half for second wheelchair

*Additional options are available at an additional cost. May not be available for all funding sources.



Universal Quick Shift Joint

Included if Fold Down Joint option is not selected

Fold Down Joint Option

left side | right side

Fold Down Joint for quick folding of mount. Left and right is from perspective of person in wheelchair. Fold Down NOT available for hybrids.



Offset spacers provide additional clearance for mounting around obstacles.

1" Spacer	1 1/2" Spacer
_____ QTY	_____ QTY



Photos

Please provide photos of your client’s wheelchair. Include tray and other accessories in photo. Make sure to include the device or a placeholder meant to present the device in the desired position.



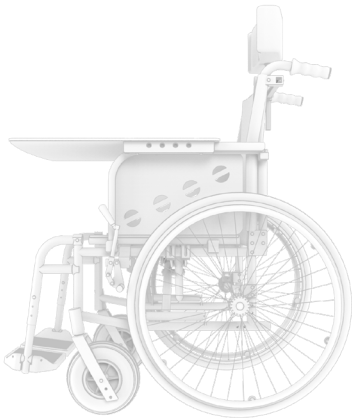
Front

Click to upload picture



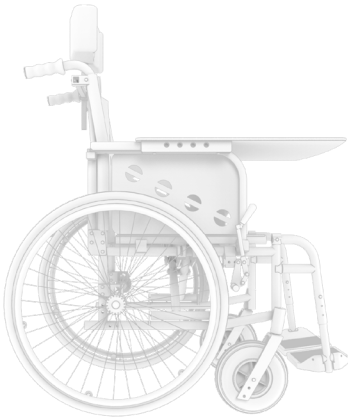
Back

Click to upload picture



Left

Click to upload picture



Right

Click to upload picture